

Monolayer Graphene transferred on glass, PET, Si, SiO₂/Si

Innovation and a Passion for Challenge



NANO CARBON
GRAPHENE TECHNOLOGIES

Nano Carbon stays at the cutting edge of graphene technology. A pioneer in large-scale graphene we offer you superior quality monolayer graphene transferred on an array of substrates to fulfill your specific requirements. Our advantage lies in the ability to produce films up to 300 mm x 300 mm using specially designed equipment built by First Nano exclusively for Nano Carbon. We have also constructed an innovative unit for transferring graphene on to arbitrary substrates.

Our ability to deliver high quality personalized service is widely appreciated by our clients.

Properties

Our products demonstrate outstanding properties owing to a well-developed graphene growth and transfer technology.

	Glass 1LG	SiO ₂ /Si 1LG	PET 1LG	PET 2LG	PET 3LG	
	Multilayer on request					
300K mobility [cm ² /Vs]	1500	1500	3000	4500	4500	1500
Charge density	1÷2E12	5÷8E12	1÷3E12			6E13
Sheet Resistance [Ω/sq]	1500	900	900	500	300	80
Coverage [%]	>99.5					

LG - layer graphene

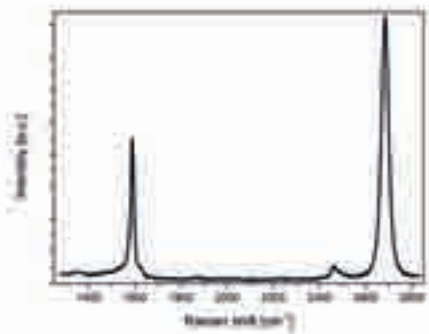
Transport properties (mobility and charge density) measured by Hall method at RT.



Unique system for the manufacturing of 300mm x 300mm high quality Graphene at commercial levels, custom-built by First Nano, a subsidiary of CVD Equipment Corporation for Nano Carbon.

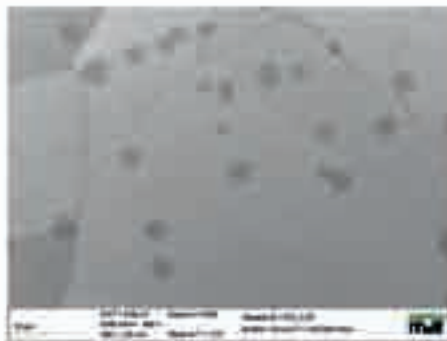
Raman spectrum of graphene on SiO₂/Si

- extremely low 2D band FWHM (24 cm⁻¹)



SEM image of graphene on SiO₂/Si

- a small number of 2nd graphene layer islands



Optical microscope image of graphene on SiO₂/Si

- extremely high coverage with excellent graphene layer



Quality and reliability is high priority at Nano Carbon. Product quality and conformity are secured by comprehensive tests of all individual products.

Applications

Our products are ideal for use in: solar energy, HF electronics, spintronics, bio-sensors, gas-sensors, photodetectors, new carbon electronics, graphene semiconductor chips, graphene computer memory.

Size

The standard size is 1" x 1", 2" x 2", 4" x 4"

Any other size up to 12" x 12" can be ordered on request.

A current price list is available at the following link:
www.nano-carbon.pl/buy-graphene/epitech

GRAPHENE shop.PL

Manufacturer: Nano Carbon, Sp. z o.o.
Adress: Wolczynska 133
01-919 Warsaw, Poland
Phone: +48 22 354-7444
E-Mail: biuro@nano-carbon.pl
Information: info@nano-carbon.pl
Sales Department: buy@graphenshop.pl
Website: www.nano-carbon.pl